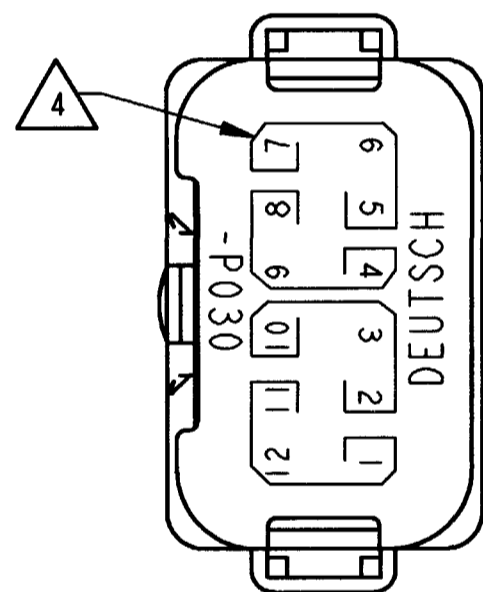
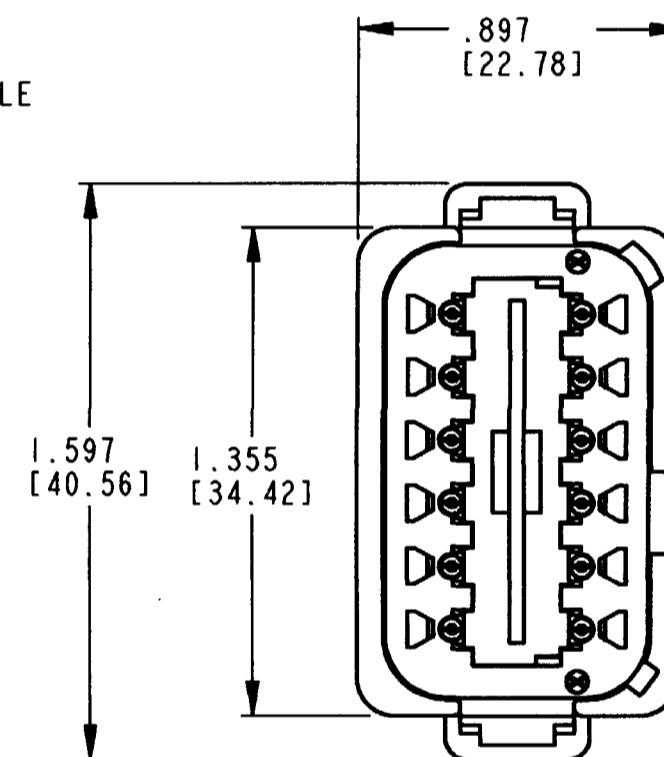
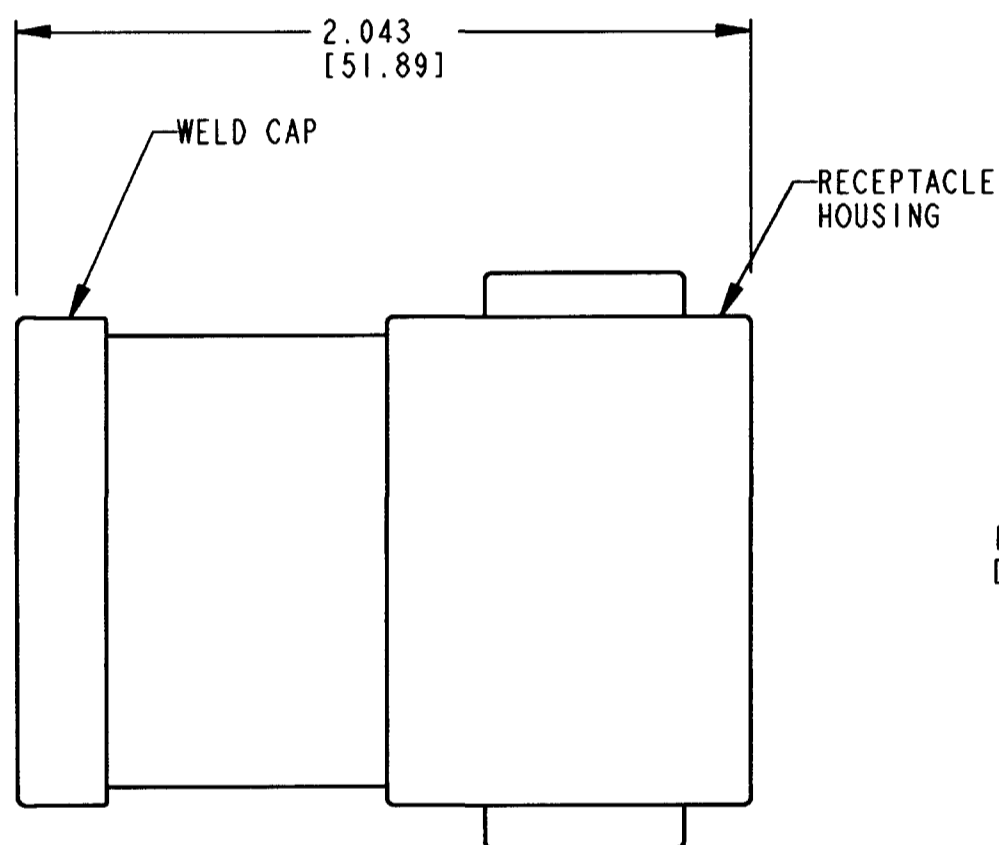


3D VIEW



REV
NC **DT04-12PA-P030**

| REVISIONS | | | |
|-----------|-----------------------------|--------|----------|
| SYM | DESCRIPTION | DATE | APPROVED |
| NC | NEW RELEASE PER E.O. P16658 | 5-5-00 | RNL |
| | | | |
| | | | |



- 5. MAXIMUM CURRENT RATING FOR THE 3 PIN BUSBAR IS 13 AMPS.
 - 4. BORDERS SIGNIFY THAT EACH GROUP OF PINS (PINS 1,11,12, PINS 2,3,10, PINS 4,8,9, AND PINS 5,6,7 ARE BUSSED TOGETHER WITH A 3 PIN BUSBAR.
 - 3. THIS DT04-12PA-P030 MATES WITH DT06-12SA-**** (**** = ALL MODIFICATIONS). CONSULT FACTORY FOR MODIFICATIONS.
 - 2. DIMENSIONS ARE ±.025[0.63] UNLESS OTHERWISE SPECIFIED.
 - 1. DIMENSIONS ARE IN INCHES [MILLIMETERS].
- NOTES:

| SIGNATURE & DATE | |
|------------------|---------------------------|
| DR | P. BURKE 5/2/00 |
| CHK | <i>[Signature]</i> |
| PE | <i>[Signature]</i> 5-4-00 |
| APPD | R. Koed 5-5-00 |
| SCALE | NONE WT |

DT 12 WAY RECEPTACLE
KEY ARRANGEMENT -A-
(4) 3 PIN BUSBARS-NICKEL PLATED
COLOR: GREY

ENVELOPE

| | |
|--|-------------------------|
| CP | MATL. CODE |
| The Deutch Company DEUTSCH I.P.D. 3850 INDUSTRIAL AVE. HEMET, CALIF. 92545 | |
| B | DT04-12PA-P030 |
| DWG. SIZE | CODE 11139 SHEET 1 OF 1 |